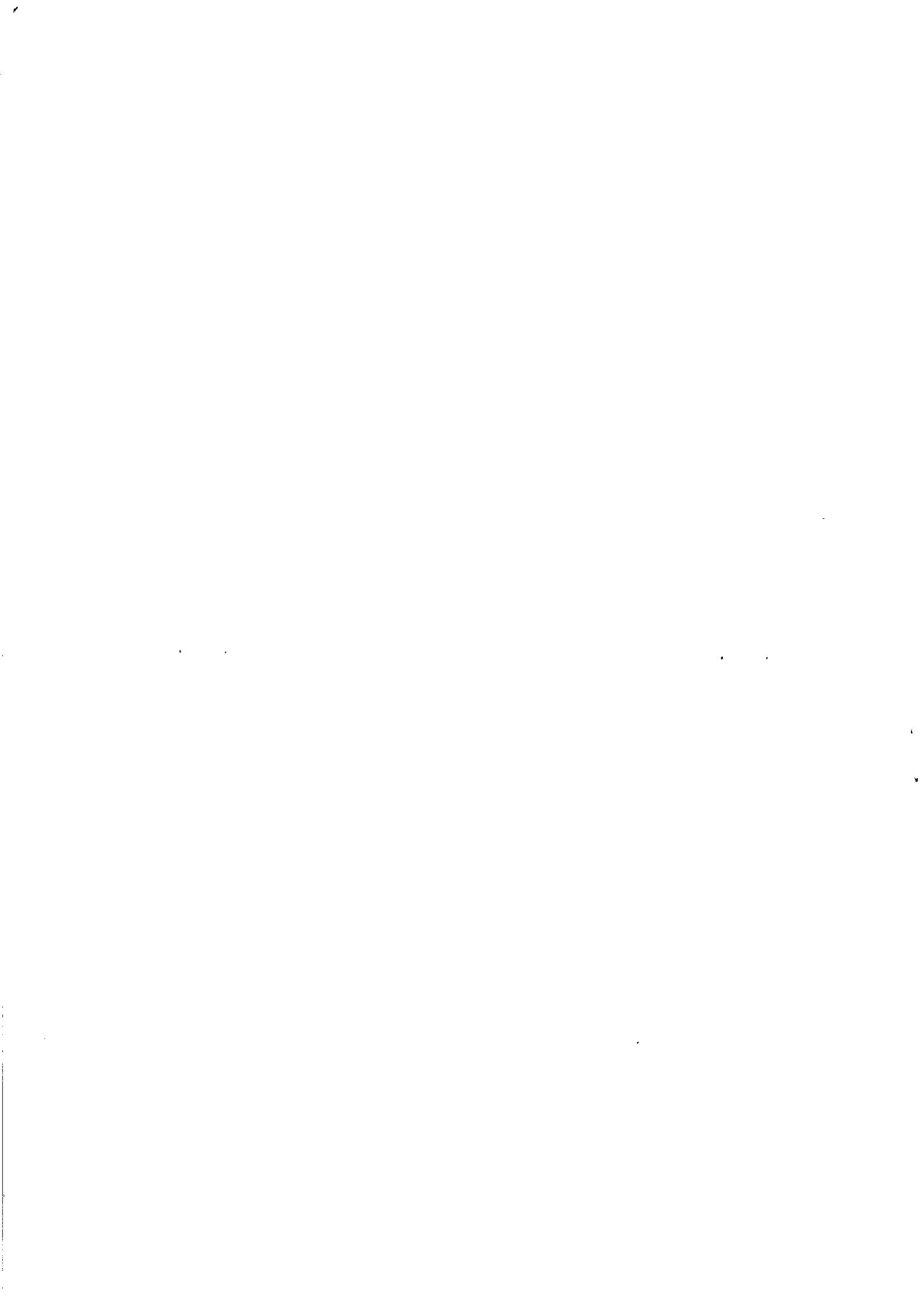


ULTRA-8 CONTROL PANEL

Quick Reference Manual





Customer Details

Customer Name	
Customer #	
Contact Name	
CS Account Code 1	
CS Account Code 2	
Security Access Code	
Panel Phone	
Mobile Phone	
Address 1	
Address 2	
Address 3	
Post Code	State
Installer Code	
Date Installed	
Installer Name	
Notes:	

Customer # _____

Customer Name: _____

Quick Start Notes & Tips

These notes are designed to help you quickly set up the panel to your requirements.

You must be in Installer Mode to access any of the options below.

Zones

Default Setting

- 1 Entry Zone, Slay Mode ON P301E - 20 Seconds, P139E - 1 enabled
- 2 Handover Zone P137E - 2 enabled
- 3 Instant
- 4 Instant
- 5 Instant
- 6 Instant
- 7 Instant
- 8 Instant

Tamper 24Hr, EOL required

Note:

- 1) For handover zones to work, you must program an entry delay in locations P301E - P308E
- 2) All zones are instant unless they are marked with a delay time, handover or 24 hour option.

Users

1	2580	P1E
2	0	P2E
3	0	P3E
4	0	P4E
5	0	P5E
6	0	P6E
7	0	P7E
8	0	P8E
9	0	P9E
10	0	P10E
Installer	1234	P11E

Note:

- 1) All users have access to both areas and can arm in AWAY & STAY modes
- 2) If a code is required to arm the panel then location P110E & P120E must have options 1&2 enabled
- 3) If no keypad beeps are wanted in Slay mode then location P110E & P120E must have option 6 enabled

Keyfobs

- 1 Away P151E - 3 & 4 enabled, P611E to learn
- 2 Slay P152E - 5 & 6 enabled, P612E to learn
- 3 Away P153E - 3 & 4 enabled, P613E to learn
- 4 Slay P154E - 5 & 6 enabled, P614E to learn
- 5 Away P155E - 3 & 4 enabled, P615E to learn
- 6 Slay P156E - 5 & 6 enabled, P616E to learn
- 7 Away P157E - 3 & 4 enabled, P617E to learn
- 8 Slay P158E - 5 & 6 enabled, P618E to learn

Note:

- 1) All keyfobs have delayed panic (1.5 sec) enabled - Locations P161E - P168, option 7 is enabled
- 2) All keyfobs have light pulsing on Arm/Disarm enabled - P112E & P122E, options 4, 5&6 are enabled
- 3) To enable speaker beeps - P111E & P121E - options 4, 5&6 have to be enabled
- 4) To map a keyfob to an output the following must be done, e.g. Keyfob 2 will be mapped to output 3 to pulse for 1 second
 - a) Enable keyfob 2 in location P103E
 - b) Disable options 5&6 in location P1152E - this disables arming in slay mode
 - c) Enable options 1&2 in location P162E - this allows the key fob to turn on & off outputs
 - d) Disable option 1 in location P33E - this will cancel the invert option, used for fire
 - e) Enable option 3 in location P33E - this will pulse the output
 - f) Disable option 7 in location P113E - this will pulse the output on arming
 - g) Change location P223E to 10 by entering in 10 x 0.1 seconds = 1 second

You can now connect a relay to output 3 to open a garage door.

Walk Test Mode

This option is used to enable walk test mode while in Installer mode. When this option is accessed (P627E), the keypad buzzer will beep every 1 second to indicate walk test is active. When each zone is triggered, the LED on the keypad will latch on for each zone to allow verification that all zones are working. To exit walk test mode, press the Program or Enter buttons.

Walk Test Mode P627E

Write / Read to Memory Card

These options allow the panel to write/read to an external Eeprom memory card which can be plugged into the expansion socket on the control board.

Write to EEPROM board P628E

Read from EEPROM board P629E

Enrolling Wireless Keyfob Devices.

Enrolling Radio Key Codes is the same procedure as enrolling Radio Zones above.

Enrol Wireless Keyfob 1	P611E
Enrol Wireless Keyfob 2	P612E
Enrol Wireless Keyfob 3	P613E
Enrol Wireless Keyfob 4	P614E
Enrol Wireless Keyfob 5	P615E
Enrol Wireless Keyfob 6	P616E
Enrol Wireless Keyfob 7	P617E
Enrol Wireless Keyfob 8	P618E

Refer to P151E for Keyfob Options
 Refer to P152E for Keyfob Options
 Refer to P153E for Keyfob Options
 Refer to P154E for Keyfob Options
 Refer to P155E for Keyfob Options
 Refer to P156E for Keyfob Options
 Refer to P157E for Keyfob Options
 Refer to P158E for Keyfob Options

Installer Functions

Only while in installer mode

This option resets all locations back to factory default. To do this, you must be in installer mode followed by P620E.

Reset All Locations **P620E**

This option resets only the user codes, including the Master Code and the Installer Code (Users 1-11).

Reset User Codes **P621E**

This option resets locations 20-199, which are User code options, outputs, Areas A & B, Zone, Keypad and Dialler.

Reset Locations 20-199 **P622E**

This option resets locations 200-399, which are Timers, Radio Zones, Voice Module Options, DTMF Codes and Contact ID Codes.

Reset Locations 200-399 **P623E**

This option resets locations 500-599, which are Upload / Download and Dialler reporting options.

Reset Locations 500-599 **P624E**

This option resets all Wireless Detector Zones and Keyfobs codes back to default.

Reset Detector & Keyfob codes **P625E**

This option clears the Alarm Event memory buffer.

Clear Alarm Event Memory **P626E**

Outputs

- 1 Siren Driver
- 2 Light/Strobe Output - 1.5 amp
- 3 Smoke detector reset - 500mA
- 4 Relay - Piezo output - NO/NC contacts
- 5 Requires RB004 output expander
- 6 Requires RB004 output expander
- 7 Requires RB004 output expander
- 8 Requires RB004 output expander

P32E - enable option 2 for flashing light

Note:

- 1) All outputs can be reprogrammed for other options
- 2) All outputs except output 3 are default for alarm conditions
- 3) When using a flashing lamp on output 2 enable P32E - option 2 to flash the lamp.
- 4) To enable speaker beeps - P111E & P121E - options 4,5&6 have to be enabled

Dialler Options

Enable dialler - P185E Option 1 enabled
 Fax defeat - P185E Option 2 disabled
 Phone line monitoring - P185E Option 3 disabled,

If disabled, no dialler functions work
 Enable to activate fax defeat
 Enable to activate phone line monitoring

To connect the Ultra-8 to a central station follow the steps below

You must be in Installer Mode to access any of the options below.

- 1) Enter in the central station phone numbers
- 2) Enter in the Account Codes for Area A & B
- 3) Check Option 6 for test reports to be sent
- 4) Select what days of the week to send test reports
- 5) Set the time of day to send the test report
- 6) Set the clock

P501E - P504
 P332E & P333E
 P181E - P184E
 P404E
 P402E
 P401E - P407E

User Codes

There are 11 codes available in the Ultra-8 Panel, 10 user locations and 1 installer code. As default, user code # 1 has Master code permissions and can be used to enter Operators program mode.

Codes 1-10 can have from 1 to 6 digits, and Code 11 must have from 3-6 digits.

To program a User code from the Mastercode, press the PRG button then the Mastercode followed by the ENTER button, then press the PRG button followed by User location number and the ENTER button. At this stage you can enter the new code followed by the ENTER button. eg. P2580E + P2E + 456E + P2580E is the Mastercode, P2E is the User number, 4567E is the new code.

To delete a code, enter the * button where you enter the new code. eg. PRG2580E + P2E + * ENTER

Mastercode Location # 1	P1E								
User Location # 2	P2E								
User Location # 3	P3E								
User Location # 4	P4E								
User Location # 5	P5E								
User Location # 6	P6E								
User Location # 7	P7E								
User Location # 8	P8E								
User Location # 9	P9E								
User Location # 10	P10E								

Can be 1-6 digits
Can be 1-6 digits
Can be 1-6 digits
Can be 1-6 digits
Can be 1-6 digits
Can be 1-6 digits
Can be 1-6 digits
Can be 1-6 digits
Can be 1-6 digits
Can be 1-6 digits

Installer Code

Installer Code	P11E	1	2	3	4				
----------------	------	---	---	---	---	--	--	--	--

Must be 3-6 digits

User Options

User # 1	P21E	1	2	3	4	5	6	7	8
User # 2	P22E								
User # 3	P23E								
User # 4	P24E								
User # 5	P25E								
User # 6	P26E								
User # 7	P27E								
User # 8	P28E								
User # 9	P29E								
User # 10	P30E								

Options
1 = Area A
2 = Area B
3 = Arm - Away
4 = Disarm - Away
5 = Stay mode on
6 = Stay mode off
7 = User can change their code
8 = User can change all codes

Output Options A

Output # 1	P31E	1	2	3	4	5	6	7	8
Output # 2	P32E								
Output # 3	P33E								
Output # 4	P34E								
Output # 5	P35E								
Output # 6	P36E								
Output # 7	P37E								
Output # 8	P38E								

Options
1 = Invert Output
2 = Flash Output
3 = Single Pulse to Output
4 = Lockout Output
5 = Siren Driver
6 = Operated by MENU 3 command
7 = Flashes on 24 Hr Alarm
8 = Day zones linked to Pulse Timer

Disarmed By Keypob User # 4 + 2 Reporting Code

4+2 Disarm Code for Klob User 1	P571E	
4+2 Disarm Code for Klob User 2	P572E	
4+2 Disarm Code for Klob User 3	P573E	
4+2 Disarm Code for Klob User 4	P574E	
4+2 Disarm Code for Klob User 5	P575E	
4+2 Disarm Code for Klob User 6	P576E	
4+2 Disarm Code for Klob User 7	P577E	
4+2 Disarm Code for Klob User 8	P578E	

4+2 Disarm Code by AWAY or Stay Button or Key Switch

Duress Alarm 4 + 2 Reporting Code

4+2 Duress Alarm Code	P580E	
-----------------------	-------	--

Zone Excluded 4 + 2 Reporting Code

4+2 Excluded Message for Zone 1	P581E	
4+2 Excluded Message for Zone 2	P582E	
4+2 Excluded Message for Zone 3	P583E	
4+2 Excluded Message for Zone 4	P584E	
4+2 Excluded Message for Zone 5	P585E	
4+2 Excluded Message for Zone 6	P586E	
4+2 Excluded Message for Zone 7	P587E	
4+2 Excluded Message for Zone 8	P588E	

Automatic Test 4 + 2 Reporting Code

4+2 Automatic Dialler Test Code	P590E	
---------------------------------	-------	--

Zone Excluded 4 + 2 Reporting Code

4+2 Excluded Restore Code for Z1	P591E	
4+2 Excluded Restore Code for Z2	P592E	
4+2 Excluded Restore Code for Z3	P593E	
4+2 Excluded Restore Code for Z4	P594E	
4+2 Excluded Restore Code for Z5	P595E	
4+2 Excluded Restore Code for Z6	P596E	
4+2 Excluded Restore Code for Z7	P597E	
4+2 Excluded Restore Code for Z8	P598E	

Enrolling Wireless Detectors

Enrol Wireless Detector for Zone 1	P601E	
Enrol Wireless Detector for Zone 2	P602E	
Enrol Wireless Detector for Zone 3	P603E	
Enrol Wireless Detector for Zone 4	P604E	
Enrol Wireless Detector for Zone 5	P605E	
Enrol Wireless Detector for Zone 6	P606E	
Enrol Wireless Detector for Zone 7	P607E	
Enrol Wireless Detector for Zone 8	P608E	

Assign P134E for Wireless Detector
Assign P134E for Wireless Detector
Assign P134E for Wireless Detector
Assign P134E for Wireless Detector
Assign P134E for Wireless Detector
Assign P134E for Wireless Detector
Assign P134E for Wireless Detector
Assign P134E for Wireless Detector

Mains & Battery 4 + 2 Reporting Code

Low Battery 4+2 Code	P537E
Mains Failure 4+2 Code	P538E

Mains & Battery 4 + 2 Restore Code

Low Battery 4+2 Rstr Code	P539E
Mains Failure 4+2 Rstr Code	P540E

Armed By User # 4 + 2 Reporting Code

4+2 Arm Code for User 1	P541E
4+2 Arm Code for User 2	P542E
4+2 Arm Code for User 3	P543E
4+2 Arm Code for User 4	P544E
4+2 Arm Code for User 5	P545E
4+2 Arm Code for User 6	P546E
4+2 Arm Code for User 7	P547E
4+2 Arm Code for User 8	P548E
4+2 Arm Code for User 9	P549E
4+2 Arm Code for User 10	P550E

Disarmed By User # 4 + 2 Reporting Code

4+2 Disarm Code for User 1	P551E
4+2 Disarm Code for User 2	P552E
4+2 Disarm Code for User 3	P553E
4+2 Disarm Code for User 4	P554E
4+2 Disarm Code for User 5	P555E
4+2 Disarm Code for User 6	P556E
4+2 Disarm Code for User 7	P557E
4+2 Disarm Code for User 8	P558E
4+2 Disarm Code for User 9	P559E
4+2 Disarm Code for User 10	P560E

Armed By Keyfob User # 4 + 2 Reporting Code

4+2 Arm Code for Kfob User 1	P561E
4+2 Arm Code for Kfob User 2	P562E
4+2 Arm Code for Kfob User 3	P563E
4+2 Arm Code for Kfob User 4	P564E
4+2 Arm Code for Kfob User 5	P565E
4+2 Arm Code for Kfob User 6	P566E
4+2 Arm Code for Kfob User 7	P567E
4+2 Arm Code for Kfob User 8	P568E

Armed By AWAY button 4 + 2 Reporting Code

4+2 Arm by AWAY Button Code or Key switch Code	P569E
--	-------

Armed By STAY button 4 + 2 Reporting Code

4+2 STAY Arm Button Code	P570E
--------------------------	-------

Output Options B

Output # 1	P41E	1	2	3	4	5	6	7	8	Options
Output # 2	P42E	•	•	•	•	•	•	•	•	1 = Keyfob Panic
Output # 3	P43E	•	•	•	•	•	•	•	•	2 = Keypad Panic
Output # 4	P44E	•	•	•	•	•	•	•	•	3 = Keypad Fire
Output # 5	P45E	•	•	•	•	•	•	•	•	4 = Keypad Medical
Output # 6	P46E	•	•	•	•	•	•	•	•	5 = System Tamper
Output # 7	P47E	•	•	•	•	•	•	•	•	6 = Duress Alarm
Output # 8	P48E	•	•	•	•	•	•	•	•	7 = Mains Fail
										8 = Low Battery

Zone Alarms to Outputs

These options are used to map zone alarms to outputs. As default, all zones will turn on all outputs.

Output # 1	P51E	1	2	3	4	5	6	7	8	Options
Output # 2	P52E	•	•	•	•	•	•	•	•	1-8 = Normal Zone Alarms
Output # 3	P53E	•	•	•	•	•	•	•	•	1-8 = Normal Zone Alarms
Output # 4	P54E	•	•	•	•	•	•	•	•	1-8 = Normal Zone Alarms
Output # 5	P55E	•	•	•	•	•	•	•	•	1-8 = Normal Zone Alarms
Output # 6	P56E	•	•	•	•	•	•	•	•	1-8 = Normal Zone Alarms
Output # 7	P57E	•	•	•	•	•	•	•	•	1-8 = Normal Zone Alarms
Output # 8	P58E	•	•	•	•	•	•	•	•	1-8 = Normal Zone Alarms

Stay Zones to Outputs

These options are used to map Stay zone alarms to outputs. As default, all zones will turn on outputs 1 & 2.

Output # 1	P61E	1	2	3	4	5	6	7	8	Options
Output # 2	P62E	•	•	•	•	•	•	•	•	1-8 = Stay Zone Alarms
Output # 3	P63E	•	•	•	•	•	•	•	•	1-8 = Stay Zone Alarms
Output # 4	P64E	•	•	•	•	•	•	•	•	1-8 = Stay Zone Alarms
Output # 5	P65E	•	•	•	•	•	•	•	•	1-8 = Stay Zone Alarms
Output # 6	P66E	•	•	•	•	•	•	•	•	1-8 = Stay Zone Alarms
Output # 7	P67E	•	•	•	•	•	•	•	•	1-8 = Stay Zone Alarms
Output # 8	P68E	•	•	•	•	•	•	•	•	1-8 = Stay Zone Alarms

24 Hr Zones to Outputs

These options are used to map 24Hr Zone alarms to outputs. As default, all zones will turn on outputs 1 & 2.

Output # 1	P71E	1	2	3	4	5	6	7	8	Options
Output # 2	P72E	•	•	•	•	•	•	•	•	1-8 = 24 Hr Zone Alarms
Output # 3	P73E	•	•	•	•	•	•	•	•	1-8 = 24 Hr Zone Alarms
Output # 4	P74E	•	•	•	•	•	•	•	•	1-8 = 24 Hr Zone Alarms
Output # 5	P75E	•	•	•	•	•	•	•	•	1-8 = 24 Hr Zone Alarms
Output # 6	P76E	•	•	•	•	•	•	•	•	1-8 = 24 Hr Zone Alarms
Output # 7	P77E	•	•	•	•	•	•	•	•	1-8 = 24 Hr Zone Alarms
Output # 8	P78E	•	•	•	•	•	•	•	•	1-8 = 24 Hr Zone Alarms

Day Zones to Outputs

These options are used to map Day Zones to outputs. As default, there are no zones are selected.

Output # 1	P81E	1	2	3	4	5	6	7	8	Options
Output # 2	P82E									1-8 = Day Zones
Output # 3	P83E									1-8 = Day Zones
Output # 4	P84E									1-8 = Day Zones
Output # 5	P85E									1-8 = Day Zones
Output # 6	P86E									1-8 = Day Zones
Output # 7	P87E									1-8 = Day Zones
Output # 8	P88E									1-8 = Day Zones

Tamper Zones to Outputs

These options are used to map Zone Tamper alarms to outputs. As default, all zones will turn on all outputs. When a zone input is set for Dual End of Line (P-130E), tampers are automatically set for that zone input. A zone tamper 1-4 is a short circuit tamper, and a zone tamper 5-8 is an open circuit tamper.

Output # 1	P91E	1	2	3	4	5	6	7	8	Options
Output # 2	P92E									1-8 = Zone Tamper
Output # 3	P93E									1-8 = Zone Tamper
Output # 4	P94E									1-8 = Zone Tamper
Output # 5	P95E									1-8 = Zone Tamper
Output # 6	P96E									1-8 = Zone Tamper
Output # 7	P97E									1-8 = Zone Tamper
Output # 8	P98E									1-8 = Zone Tamper

Keyfobs to Outputs

These options are used to map individual Keyfobs to an output. As default, no keyfobs are selected.

Output # 1	P101E	1	2	3	4	5	6	7	8	Options
Output # 2	P102E									1-8 = Keyfobs
Output # 3	P103E									1-8 = Keyfobs
Output # 4	P104E									1-8 = Keyfobs
Output # 5	P105E									1-8 = Keyfobs
Output # 6	P106E									1-8 = Keyfobs
Output # 7	P107E									1-8 = Keyfobs
Output # 8	P108E									1-8 = Keyfobs

Temporary Output Disable

Output Disable	P109E	1	2	3	4	5	6	7	8	Options
										Disabled for one alarm or arm cycle

Telephone # 1	P501E	1-16 Digits
Telephone # 2	P502E	1-16 Digits
Telephone # 3	P503E	1-16 Digits
Telephone # 4	P504E	1-16 Digits

Security Access Code

If this option is programmed with a code, to obtain connection using the Upload/Download software via a modem, a Security Access code must be entered to gain access. The Code can be upto 8 digits long.

Security Code Up to 8 Numbers

Zone Alarm 4 + 2 Reporting Code

4 + 2 Alarm Code for Zone 1	P511E	01
4 + 2 Alarm Code for Zone 2	P512E	02
4 + 2 Alarm Code for Zone 3	P513E	03
4 + 2 Alarm Code for Zone 4	P514E	04
4 + 2 Alarm Code for Zone 5	P515E	05
4 + 2 Alarm Code for Zone 6	P516E	06
4 + 2 Alarm Code for Zone 7	P517E	07
4 + 2 Alarm Code for Zone 8	P518E	08

System Tamper 4 + 2 Reporting Code

4 + 2 Code for System Tamper	P519E	09
------------------------------	-------	----

Zone Alarm Restore 4 + 2 Reporting Code

4 + 2 Restore Code for Zone 1	P521E	11
4 + 2 Restore Code for Zone 2	P522E	12
4 + 2 Restore Code for Zone 3	P523E	13
4 + 2 Restore Code for Zone 4	P524E	14
4 + 2 Restore Code for Zone 5	P525E	15
4 + 2 Restore Code for Zone 6	P526E	16
4 + 2 Restore Code for Zone 7	P527E	17
4 + 2 Restore Code for Zone 8	P528E	18

System Tamper Restore 4 + 2 Reporting Code

4 + 2 Code for Sys Tmp Rstr	P529E	19
-----------------------------	-------	----

Miscellaneous Alarm 4 + 2 Reporting Code

Panic Alarm 4+2 Code	P531E	21
Fire Alarm 4+2 Code	P532E	22
Medical Alarm 4+2 Code	P533E	23

Miscellaneous Alarm 4 + 2 Restore Code

Panic Alarm Rstr 4+2 Code	P534E	24
Fire Alarm Rstr 4+2 Code	P535E	25
Medical Alarm Rstr 4+2 Code	P536E	26

Zone Options

	Zones							
	1	2	3	4	5	6	7	8
24 Hr Fire Zone	P129E							
Area A Zones	P131E							
Area B Zones	P132E							
Zone NC or NO	P133E							
Radio Zone	P134E							
Manual Exclude Zone	P135E							
Audio Exclude Zone	P136E							
Handover Zone	P137E							
Two Trigger Zone	P138E							
Stay Mode Zone	P139E							
24 Hr Zone	P140E							
24 Hr Zone Non-Latch	P141E							
Lockout Zone	P142E							
Day Zone	P143E							
Permanent Day Zone	P144E							
Arm if not Sealed	P145E							
Report Excludes to Dialler	P146E							
Multiple Alarms to Dialler	P147E							
Report Zone Tamper to Dialler	P148E							
Zones report to Area B Account	P149E							
Zones with Inactivity Timer	P150E							

NIC = Off, NIO = On
Also zones that are not used

An entry time must be programmed P301E-P308E

Zones enabled are included

Option 4 at P170E must be on

Time period set at P240E in Hours

Keyfob Options "A"

	Options							
	1	2	3	4	5	6	7	8
Keyfob # 1 Options A	P151E							
Keyfob # 2 Options A	P152E							
Keyfob # 3 Options A	P152E							
Keyfob # 4 Options A	P154E							
Keyfob # 5 Options A	P155E							
Keyfob # 6 Options A	P156E							
Keyfob # 7 Options A	P157E							
Keyfob # 8 Options A	P158E							

- Options
- 1 = Assigned to Area A
- 2 = Assigned to Area B
- 3 = Can Arm Area
- 4 = Can Disarm Area
- 5 = Can Arm Stay Mode
- 6 = Can Disarm Stay Mode
- 7 = Spare
- 8 = Disabled if panel is in Alarm

Keyfob Options "B"

	Options							
	1	2	3	4	5	6	7	8
Keyfob # 1 Options B	P161E							
Keyfob # 2 Options B	P162E							
Keyfob # 3 Options B	P162E							
Keyfob # 4 Options B	P164E							
Keyfob # 5 Options B	P165E							
Keyfob # 6 Options B	P166E							
Keyfob # 7 Options B	P167E							
Keyfob # 8 Options B	P168E							

- Options
- 1 = Turn Output On
- 2 = Turn Output Off
- 3 = Visonic PowerCode Battery Low
- 4 = Spare
- 5 = Report Panic to Dialler
- 6 = Immediate Panic
- 7 = Delayed Panic (1.5 Sec)
- 8 = Spare

Entry Delays

This option allows each zone to have a separate delay time from 0 (no delay) to 9999 Seconds.

Zone 1 Entry Delay Time	P301E							
Zone 2 Entry Delay Time	P302E							
Zone 3 Entry Delay Time	P303E							
Zone 4 Entry Delay Time	P304E							
Zone 5 Entry Delay Time	P305E							
Zone 6 Entry Delay Time	P306E							
Zone 7 Entry Delay Time	P307E							
Zone 8 Entry Delay Time	P308E							

- 0-9999 Seconds
- 0-9999 Seconds
- 0-9999 Seconds
- 0-9999 Seconds
- 0-9999 Seconds
- 0-9999 Seconds
- 0-9999 Seconds
- 0-9999 Seconds

Mains Fail Reporting Delay

Mains Fail Report Delay	P319E							
-------------------------	-------	--	--	--	--	--	--	--

0-9999 Seconds

Contact ID Codes

Zone 1 Contact ID Code	P321E							
Zone 2 Contact ID Code	P322E							
Zone 3 Contact ID Code	P323E							
Zone 4 Contact ID Code	P324E							
Zone 5 Contact ID Code	P325E							
Zone 6 Contact ID Code	P326E							
Zone 7 Contact ID Code	P327E							
Zone 8 Contact ID Code	P328E							
Keypad Panic Alarm ID Code	P329E							
Keypad Fire Alarm ID Code	P330E							
Keypad Medical Alarm ID Code	P331E							

- 3 Digit Number
- 3 Digit Number
- 3 Digit Number
- 3 Digit Number
- 3 Digit Number
- 3 Digit Number
- 3 Digit Number
- 3 Digit Number
- 3 Digit Number
- Panic * or 1 & 3 Digit Press
- 4 & 6 Digit Press
- 7 & 9 Digit Press

Account Codes

Account Code for Area A	P332E							
Account Code for Area B	P333E							

DTMF Remote Control Codes

Remote Control Code Area A	P334E							
Remote Control Code Area B	P335E							
Rem Crntf Code Output Control	P336E							
Rem Crntf Code Enable Mic /IP	P337E							

- 4 Digit Code
- 4 Digit Code
- 4 Digit Code
- 4 Digit Code

Radio Zone Detector Options

Radio Zone # 1 Options	P231E	0
Radio Zone # 2 Options	P232E	0
Radio Zone # 3 Options	P233E	0
Radio Zone # 4 Options	P234E	0
Radio Zone # 5 Options	P235E	0
Radio Zone # 6 Options	P236E	0
Radio Zone # 7 Options	P237E	0
Radio Zone # 8 Options	P238E	0

- Options
- 1 = Crow AE PIR & Low Battery
 - 2 = Crow AE Reed O/Close & Low Batt
 - 3 = Crow Merlin PIR (no supervision)
 - 4 = Crow Merlin PIR (with supervision)
 - 31= Visonic FixedCode Transmitters
 - 32= Visonic Powercode (supervised signal ignored)
 - 33= Visonic Powercode (unsupervised signal active)

Radio Zone Supervised Timer

Radio Detector Supervised Timer	P239E	255
---------------------------------	-------	-----

0-255 Minutes

Inactivity Timer

Zone Inactivity Timer	P240E	0-2
-----------------------	-------	-----

0-255 Hours

Reporting Options

Reporting Options Phone # 1	P241E	0
Reporting Options Phone # 2	P242E	0
Reporting Options Phone # 3	P243E	0
Reporting Options Phone # 4	P244E	0

- Options
- 1 = Contact ID
 - 2 = Domestic Dial
 - 3 = Pager
 - 4 = Speech Dialer

Max Retries per Phone Number

Max Retries Phone # 1	P245E	0
Max Retries Phone # 2	P246E	0
Max Retries Phone # 3	P247E	0
Max Retries Phone # 4	P248E	0

0-99

Auto Answer Ring Count

Auto Answer Ring Count	P249E	0
------------------------	-------	---

0-99

DTMF Control

Start of DTMF Control Messages	P250E	0
--------------------------------	-------	---

0-99

Voice Message Programming

Zone 1 Voice Message #	P251E	0
Zone 2 Voice Message #	P252E	0
Zone 3 Voice Message #	P253E	0
Zone 4 Voice Message #	P254E	0
Zone 5 Voice Message #	P255E	0
Zone 6 Voice Message #	P256E	0
Zone 7 Voice Message #	P257E	0
Zone 8 Voice Message #	P258E	0

- Message 1-8
- Message 1-8
- Message 1-8
- Message 1-8
- Message 1-8
- Message 1-8
- Message 1-8
- Message 1-8

Panic Alarm voice message #	P259E	0
Fire Alarm voice message #	P260E	0
Med Alarm voice message #	P261E	0
Low Batt voice message #	P262E	0

- Message 9-12
- Message 9-12
- Message 9-12
- Message 9-12

Miscellaneous Options

Miscellaneous Options	P170E	0
-----------------------	-------	---

- Options
- 1 = Panel Tamper N/C=Off or EOL=On
 - 2 = Installer Lockout
 - 3 = Disable Mains Fall Test
 - 4 = Arm only if Zones are Sealed
 - 5 = No k/p beep on supervised Radio Fault
 - 6 = No keypad beep on Zone Inactivity
 - 7 = PRG Button disables Day Alarm Zones
 - 8 = No keypad beep on Silent 24 Hr Zone

Keypad Area Assignment

A keypad must be assigned to an Area before it can control that Area. ie. Allow to Arm / Disarm.

Assigned to Area A	P171E	0
Assigned to Area B	P172E	0

Keypads

Keypads with Panic Button Enabled

Panic Button Enabled	P173E	0
1 & 3 Panic Function Enabled	P174E	0
Panic Beep Enabled	P175E	0

Keypads

Keypads with Fire Buttons (4 & 6) Enabled

4 & 6 Fire Function Enabled	P176E	0
Fire beep Enabled	P177E	0

Keypads

Keypads with Medical Buttons (7 & 9) Enabled

7 & 9 Medical Function Enabled	P178E	0
Medical beep Enabled	P179E	0

Keypads

Stay Button to Disarm in Stay Mode

Stay button to Disarm in Stay	P180E	0
-------------------------------	-------	---

Keypads

Telephone Number Reporting Options

Telephone # 1 Options	P181E	0
Telephone # 2 Options	P182E	0
Telephone # 3 Options	P183E	0
Telephone # 4 Options	P184E	0

Options

- 1 = Stop dialling if Kissed off
- 2 = Monitor Call progress
- 3 = Blind Dial
- 4 = Send separate account codes
- 5 = Send Restores
- 6 = Send Test Calls
- 7 = Spare

Dialler Options

Dialler Options	P185E	1	2	3	4	5	6	7	8
-----------------	-------	---	---	---	---	---	---	---	---

Options

- 1 = Enable Dialler
- 2 = Fax Defeat
- 3 = Disable Phone line Monitoring
- 4 = Spare
- 5 = Spare
- 6 = Spare
- 7 = Auto Detect Modem Mode
- 8 = Bell 103 or V21, V21 is LED on

Dialler Options Set "A"

Dialler Options Set "A"	P186E	1	2	3	4	5	6	7	8
-------------------------	-------	---	---	---	---	---	---	---	---

Options

- 1 = Report Duress Alarm
- 2 = Report Mains Fail
- 3 = Report Low Battery
- 4 = Report Radio Battery Low
- 5 = Report System Tamper
- 6 = Report Phone Line Failure
- 7 = Report Supervised Radio Fault
- 8 = Report Zone Inactivity Alarm

Dialler Options Set "B"

Dialler Options Set "B"	P187E	1	2	3
-------------------------	-------	---	---	---

Options

- 1 = Report Manual Panic Alarm
- 2 = Report Manual Fire Alarm
- 3 = Report Manual Medical Alarm

Dialler Options Set "C"

Dialler Options Set "C"	P188E	1	2	3	4	5	6	7	8
-------------------------	-------	---	---	---	---	---	---	---	---

Options

- 1 = Report Arm / Disarm
- 2 = Report Stay Mode Arm / Disarm
- 3 = Report Disarm only after alarm
- 4 = Report Stay Mode Disarm after Alarm
- 5 = 24 Hour Alarms to Domestic Dial
- 6 = Send Arm Immediately
- 7 = Spare
- 8 = Spare

Output Timing Options

The output RESET TIME is the length of time the output will be On from an alarm condition. A value of "0" means the output will latch until reset by a valid user code.

Output 1 Alarm Reset Time	P311E	0-9999
Output 2 Alarm Reset Time	P312E	0-9999
Output 3 Alarm Reset Time	P313E	0-9999
Output 4 Alarm Reset Time	P314E	0-9999
Output 5 Alarm Reset Time	P315E	0-9999
Output 6 Alarm Reset Time	P316E	0-9999
Output 7 Alarm Reset Time	P317E	0-9999
Output 8 Alarm Reset Time	P318E	0-9999

The output ON TIME DELAY, is how long the output will be delayed before turning on from an alarm condition.

Output 1 On Time Delay	P201E	0-255
Output 2 On Time Delay	P202E	0-255
Output 3 On Time Delay	P203E	0-255
Output 4 On Time Delay	P204E	0-255
Output 5 On Time Delay	P205E	0-255
Output 6 On Time Delay	P206E	0-255
Output 7 On Time Delay	P207E	0-255
Output 8 On Time Delay	P208E	0-255

The output DAY MODE TIMER is how long the output will turn On following a day zone unseal. The Day Mode timer is in 0.1 Second intervals. ie, 20 is 2 seconds (0.1 x 20 = 2)

Output 1 Day Mode Time	P211E	0-99
Output 2 Day Mode Time	P212E	0-99
Output 3 Day Mode Time	P213E	0-99
Output 4 Day Mode Time	P214E	0-99
Output 5 Day Mode Time	P215E	0-99
Output 6 Day Mode Time	P216E	0-99
Output 7 Day Mode Time	P217E	0-99
Output 8 Day Mode Time	P218E	0-99

The output PULSE TIMER is how long an output will turn On when the Pulse Timer is used. The Pulse timer is in 0.1 Second intervals. ie, 20 is 2 seconds (0.1 x 20 = 2)

Output 1 Pulse Timer	P221E	0-99
Output 2 Pulse Timer	P222E	0-99
Output 3 Pulse Timer	P223E	0-99
Output 4 Pulse Timer	P224E	0-99
Output 5 Pulse Timer	P225E	0-99
Output 6 Pulse Timer	P226E	0-99
Output 7 Pulse Timer	P227E	0-99
Output 8 Pulse Timer	P228E	0-99

Day Mode to Keypad Buzzer Timer

Area A Day Zone beep to K/pd	P209E	0-99
Area B Day Zone beep to K/pd	P210E	0-99

Exit Delays

Area A Exit Delay	P219E	0-255
Area B Exit Delay	P220E	0-255

Two Trigger Timer

Two Trigger Timer	P229E	0-255
-------------------	-------	-------

Hold Up Duress Digit

Duress Digit	P230E	1-9
--------------	-------	-----

1-9 (0=Disable) Digit is in front of code